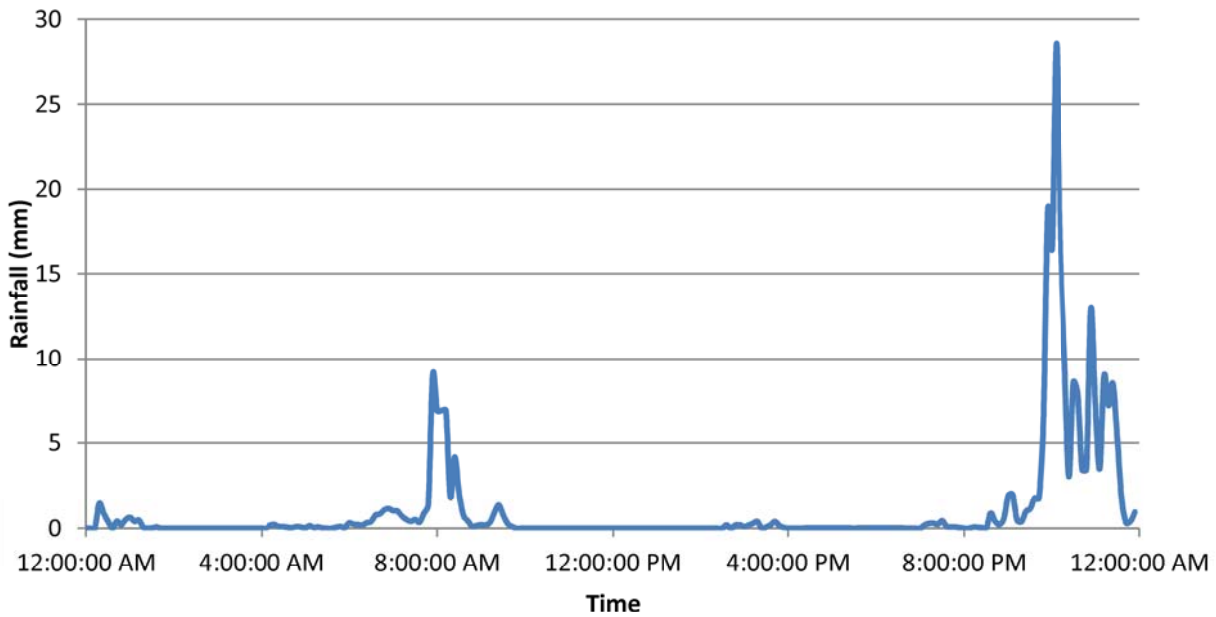
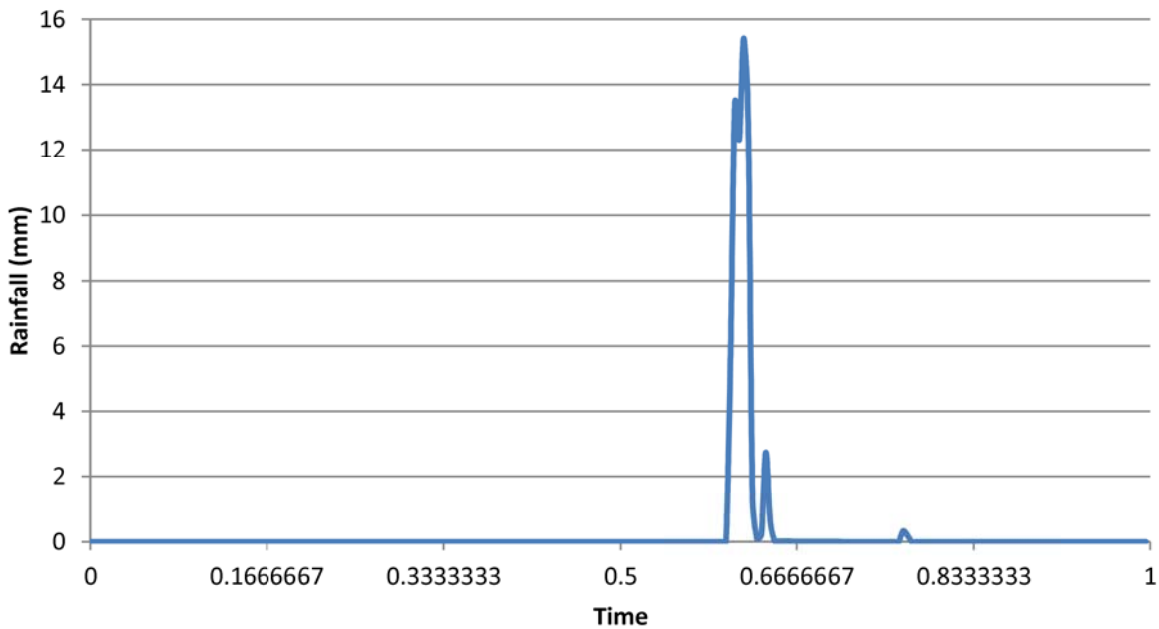
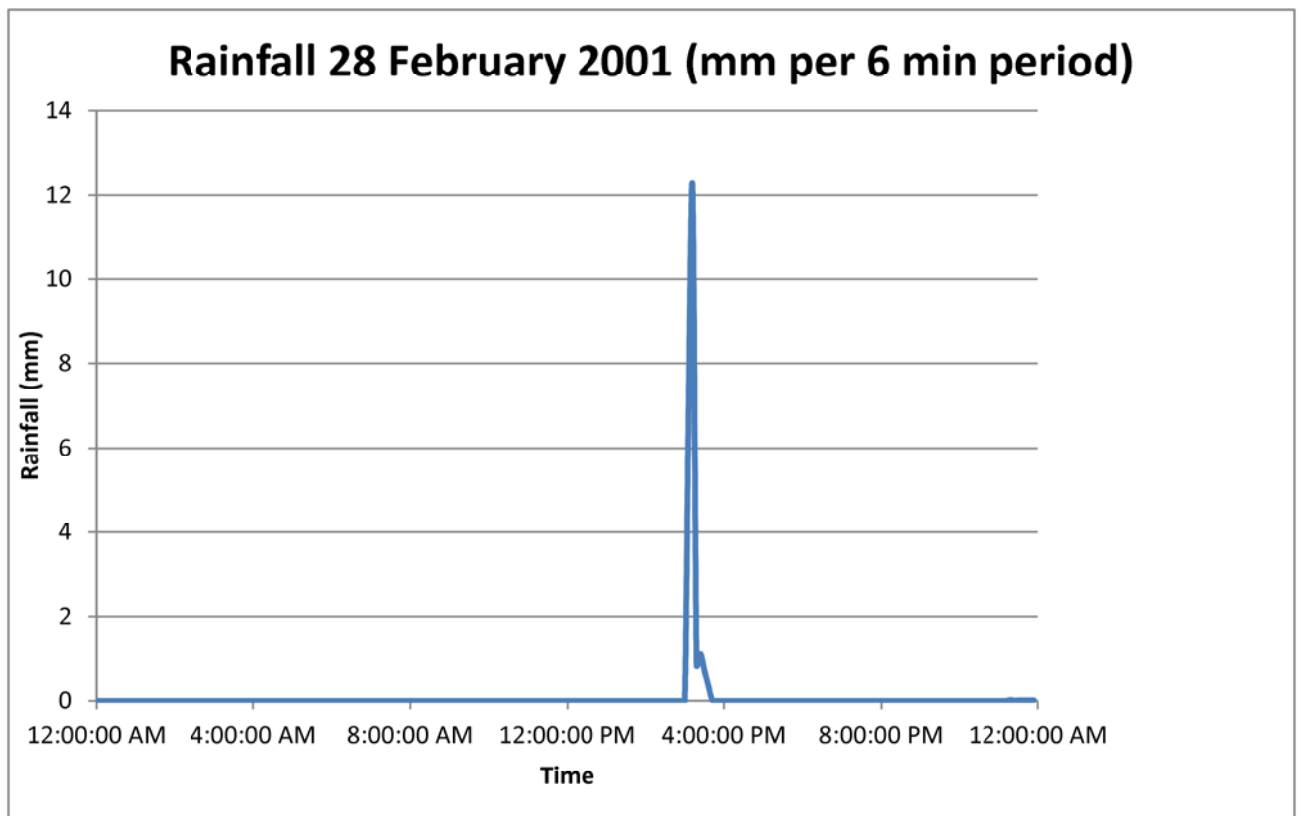
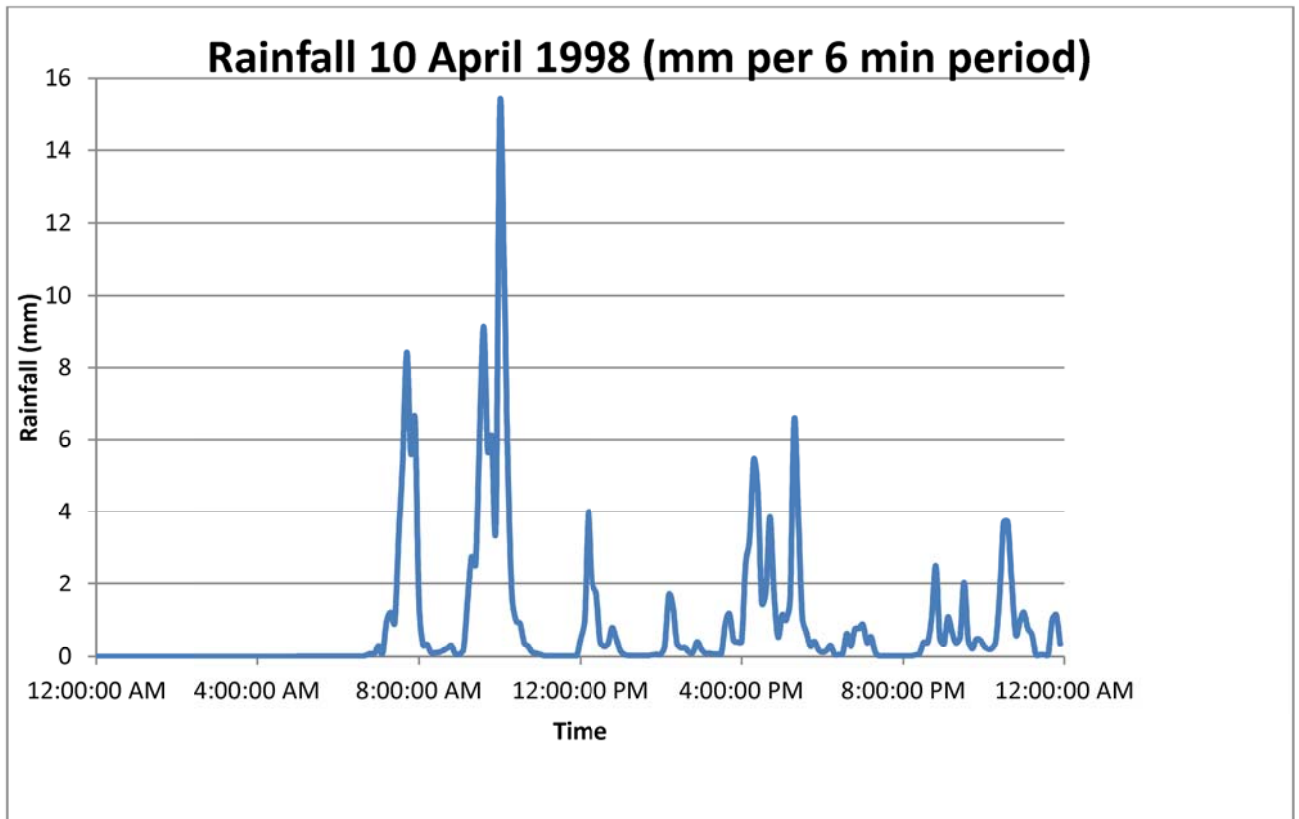


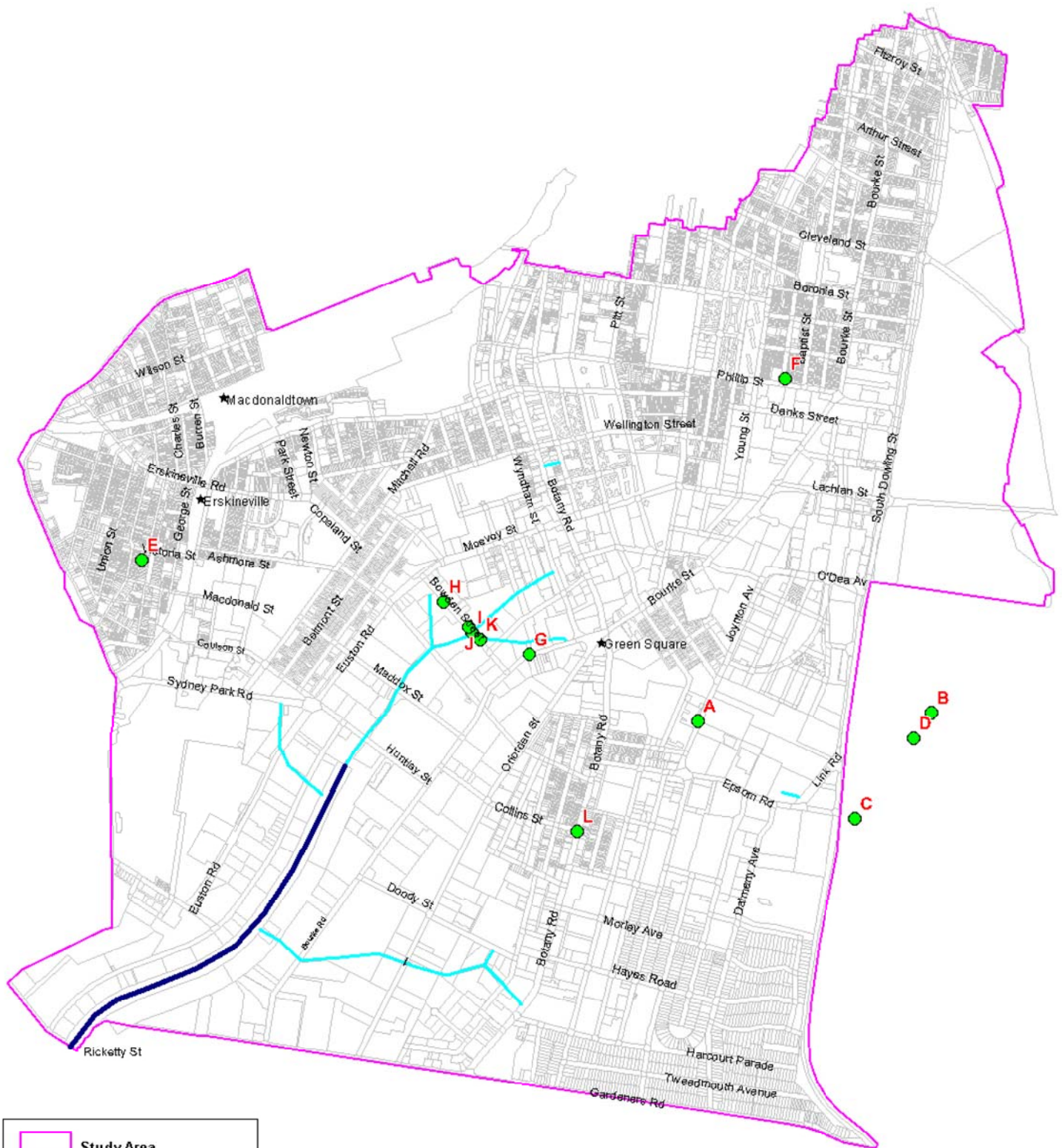
Rainfall 8 November 1984 (mm per 6 min period)



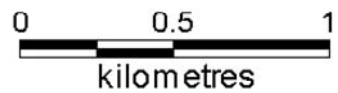
Rainfall 26 January 1991 (mm per 6 min period)

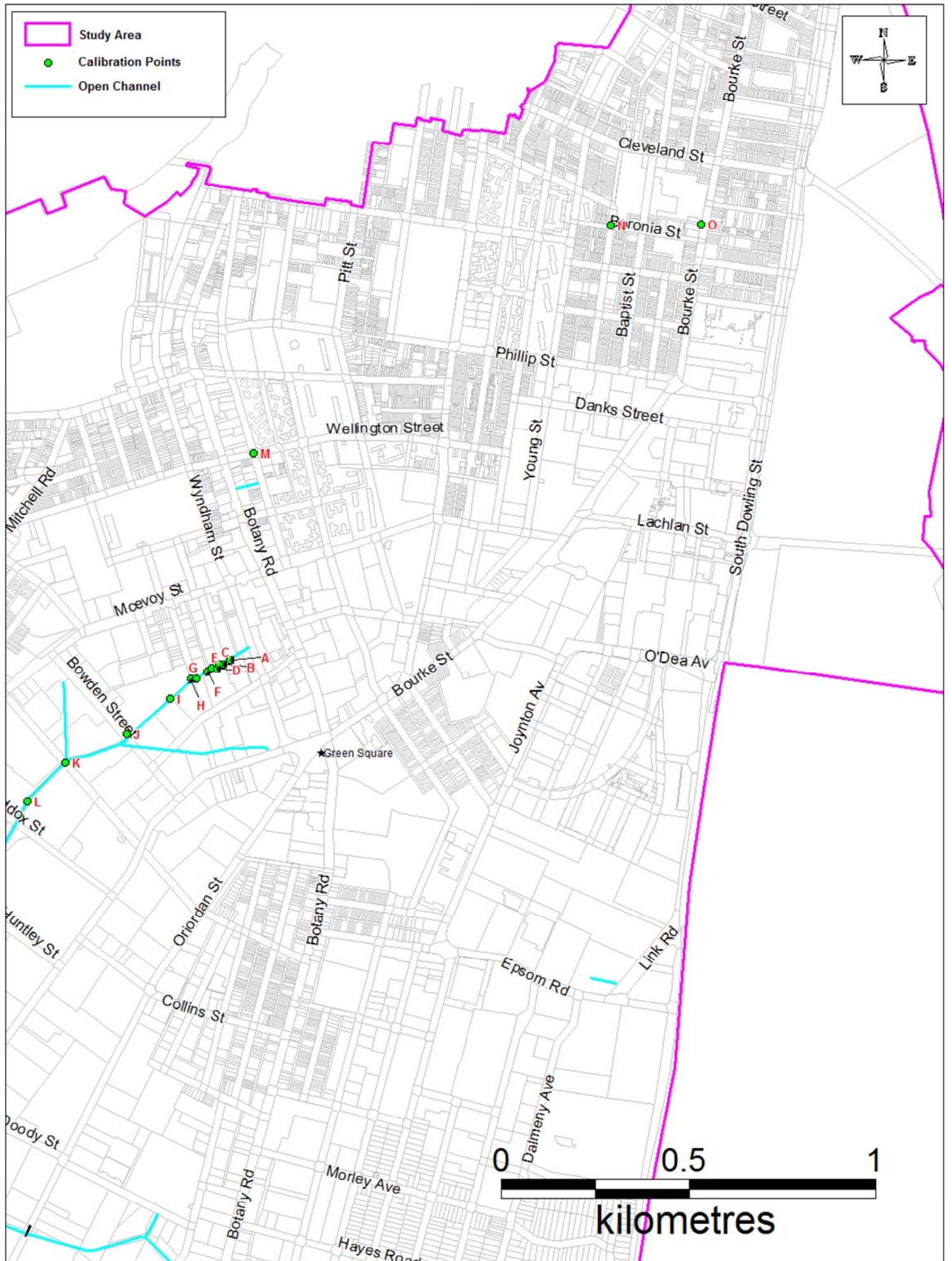


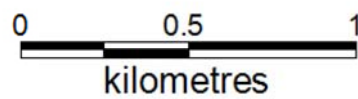
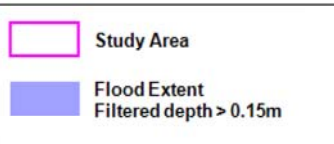
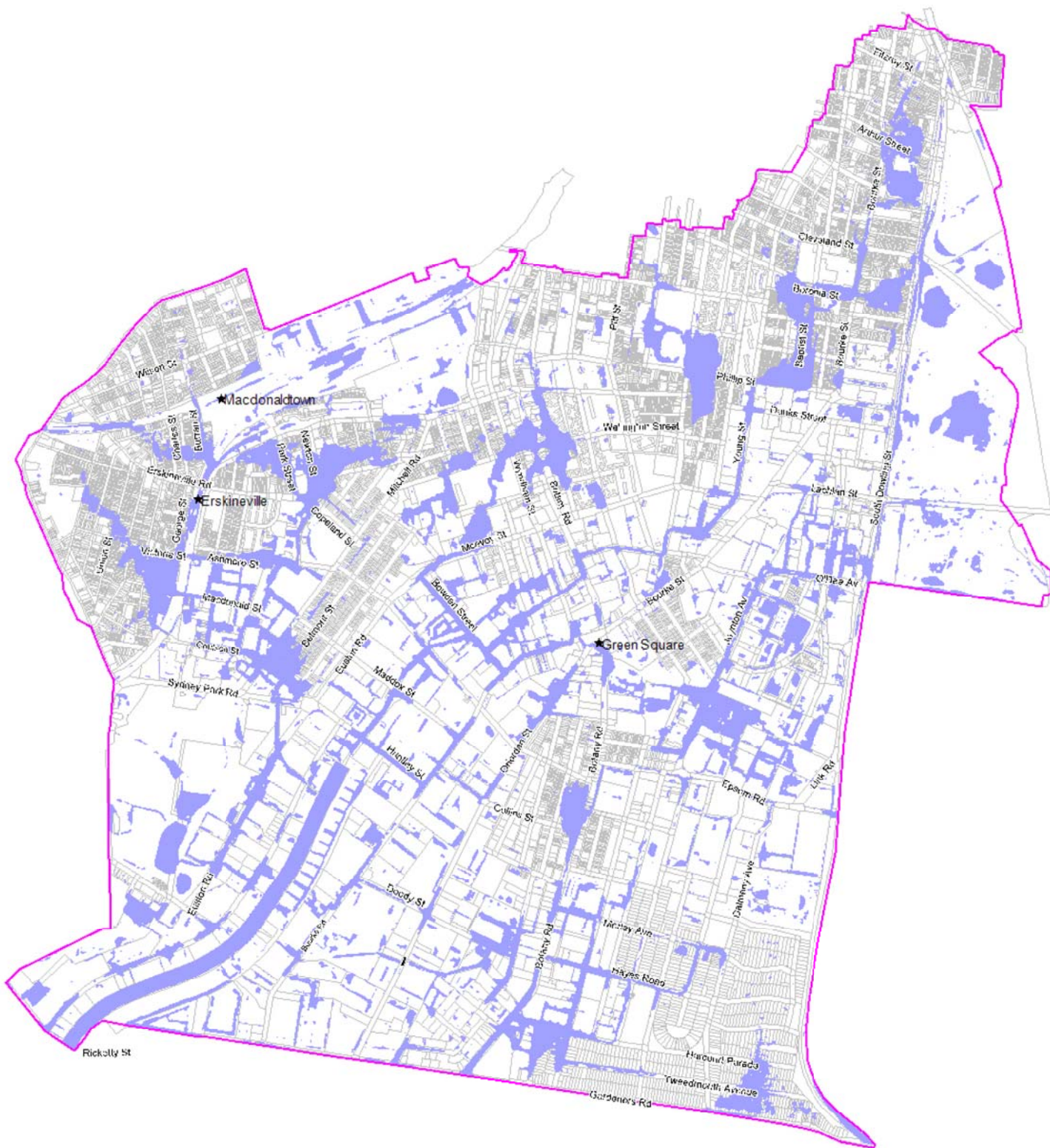
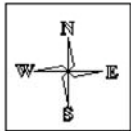


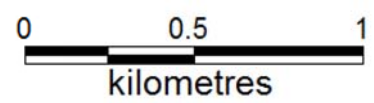
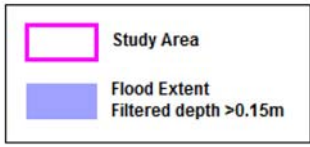
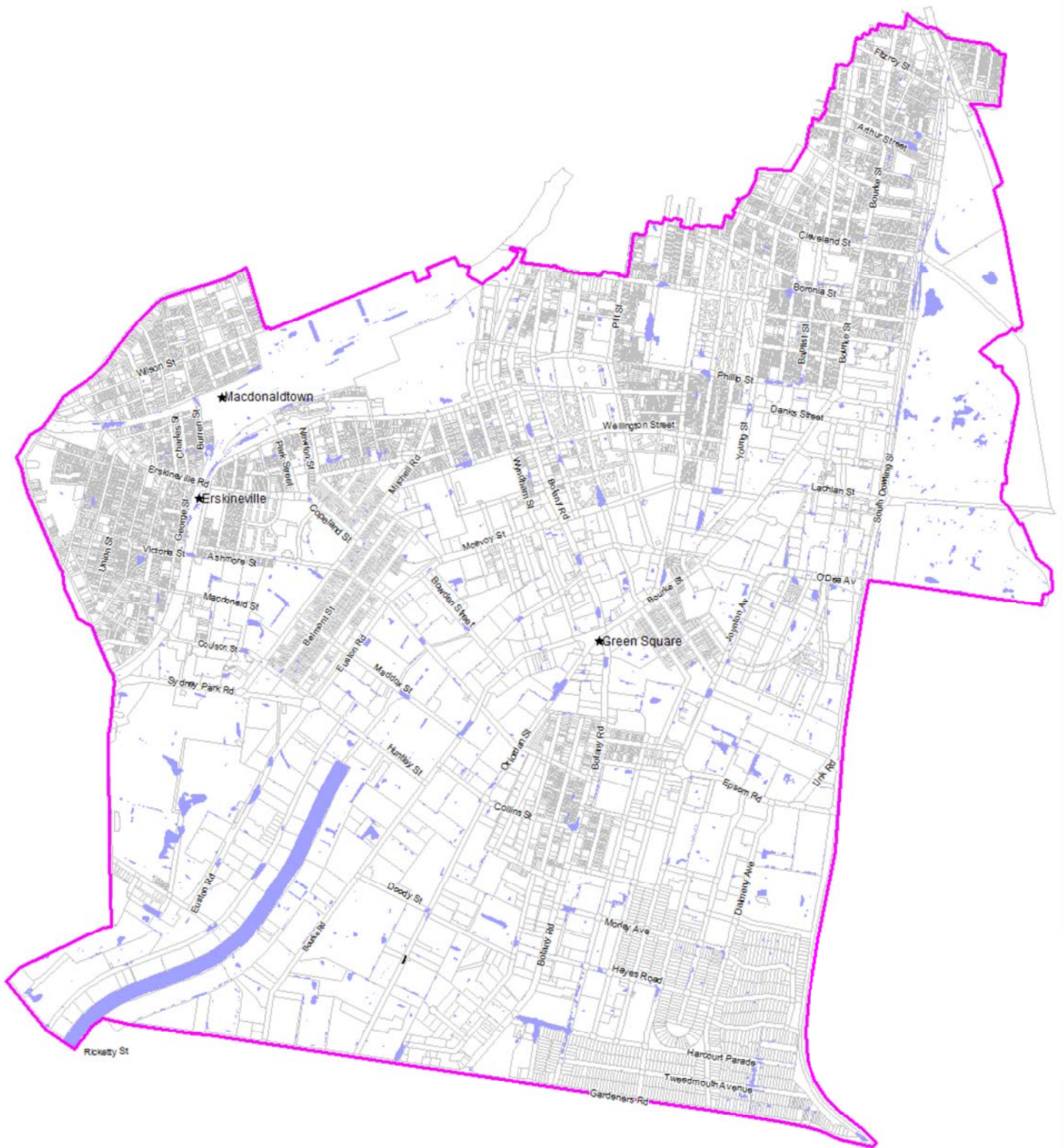


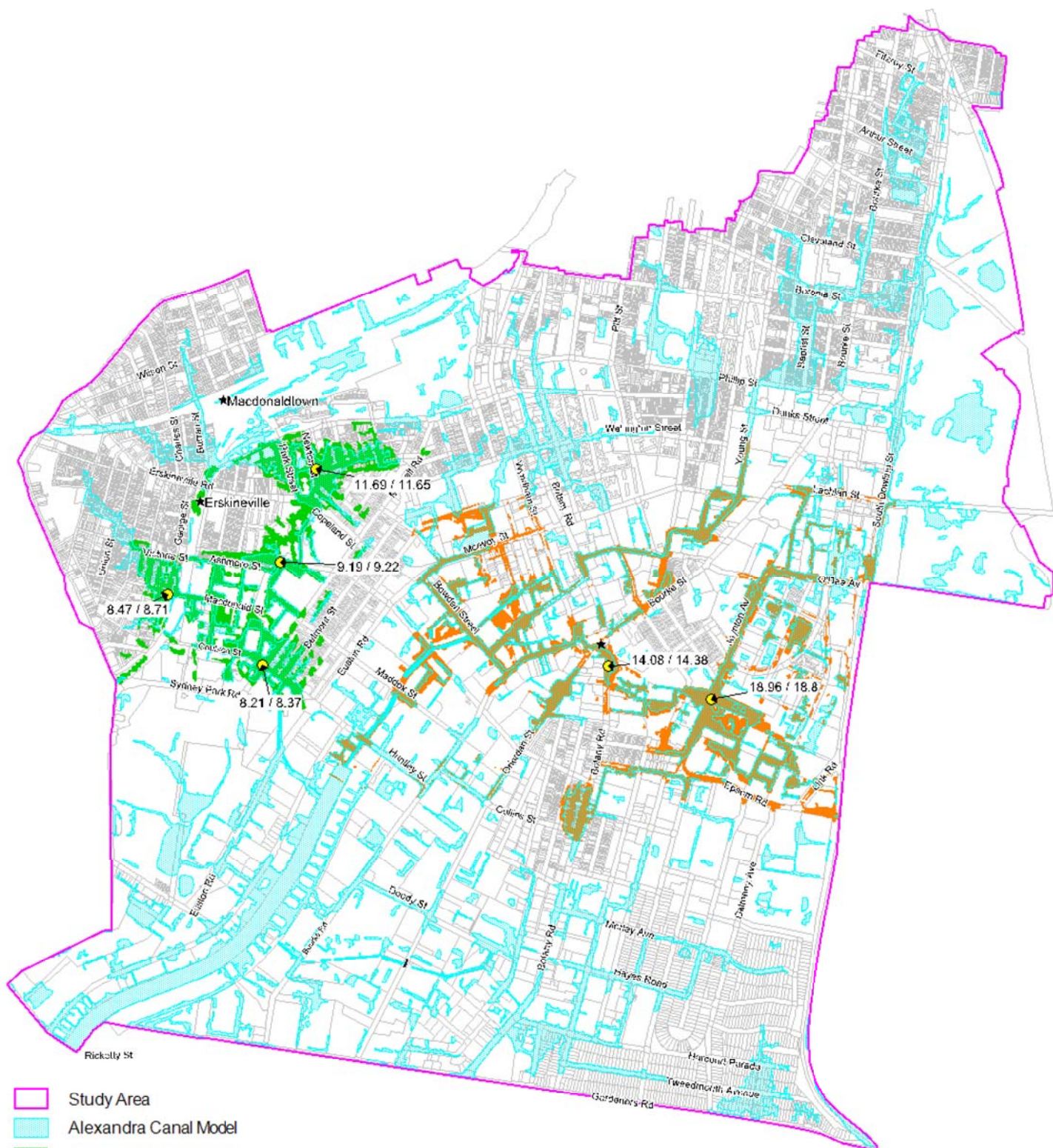
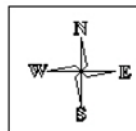
- Study Area
- calibration Points
- Alexandra Channel
- Open Channel







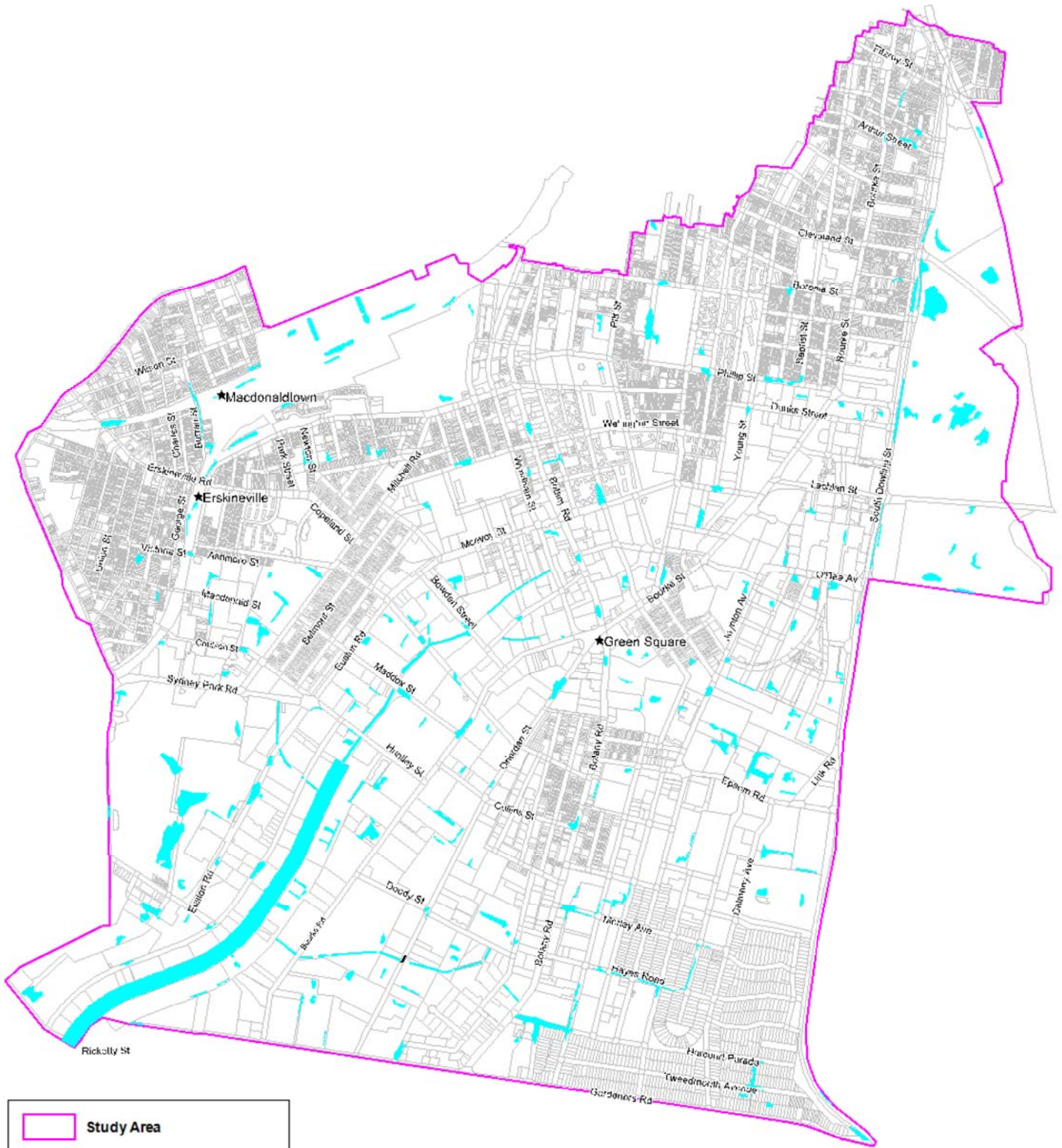






- Study Area
- Alexandra Canal Model
- Ashmore Street Model
- Green Square Town Centre Model
- Peak Water Level (Previous Study/ Current Study) (m AHD)

Note flood extents shown for peak depths >0.15m

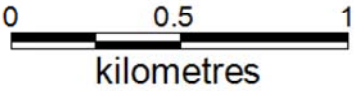


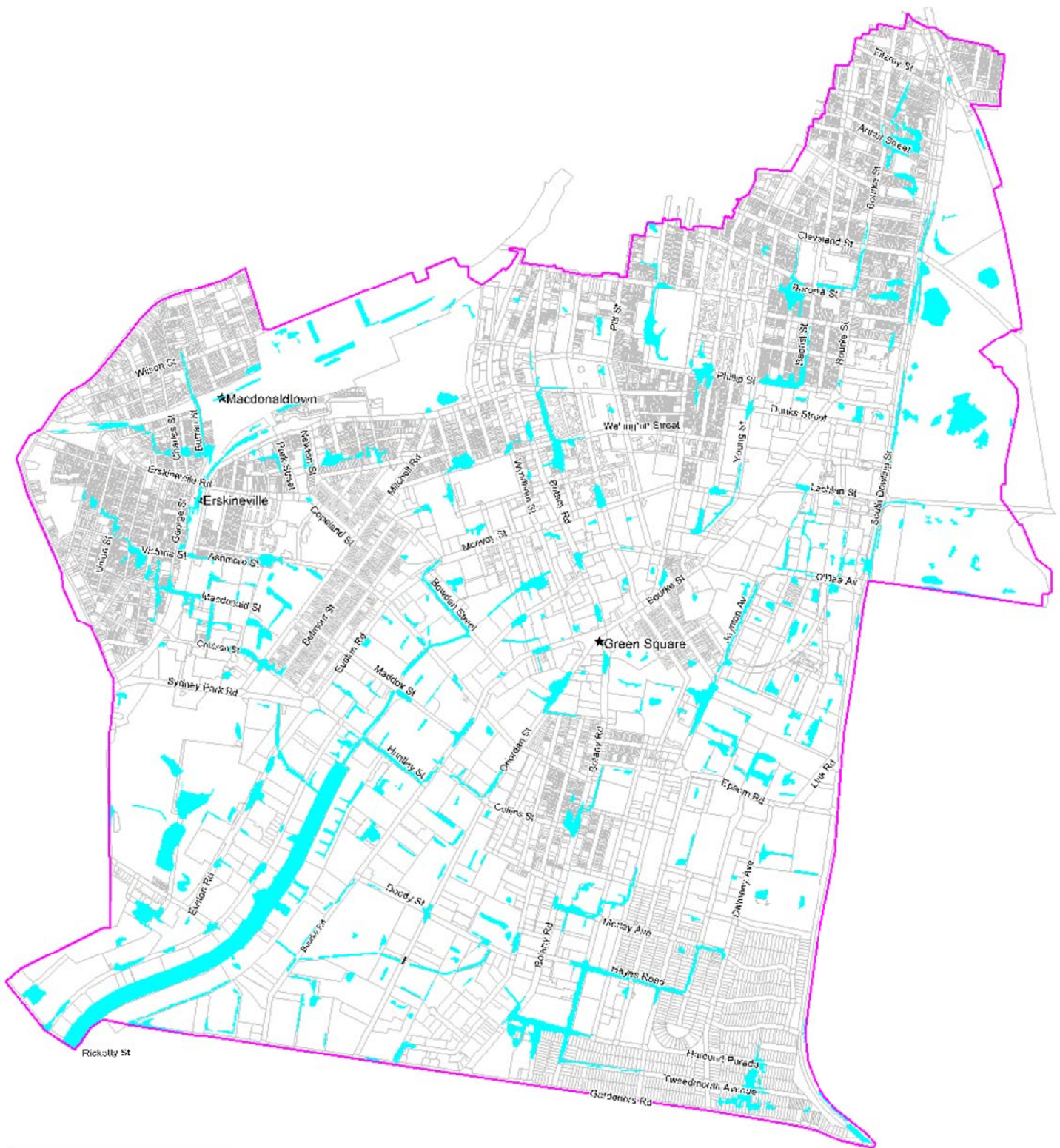



 Study Area


 1yr ARI Flood Extents

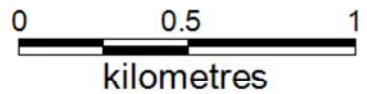
Note: Results filtered to show areas where depth $\geq 0.15\text{m}$ or velocity-depth product $\geq 0.1\text{m}^2/\text{s}$ (as described in Section 6.1).



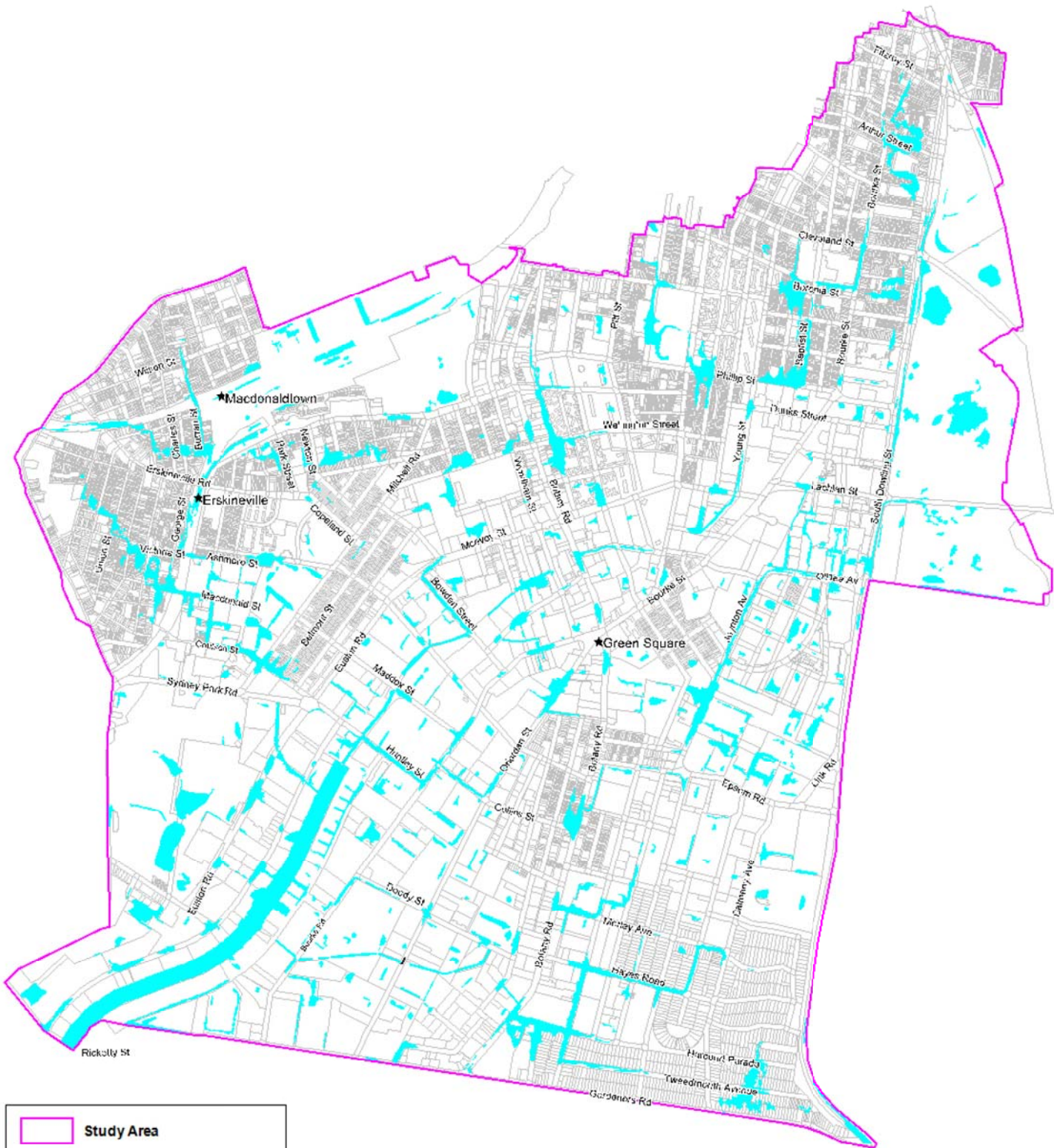



 Study Area


 5yr ARI Flood Extent



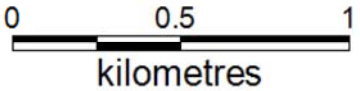
Note: Results filtered to show areas where depth $\geq 0.15\text{m}$ or velocity-depth product $\geq 0.1\text{m}^2/\text{s}$ (as described in Section 6.1).

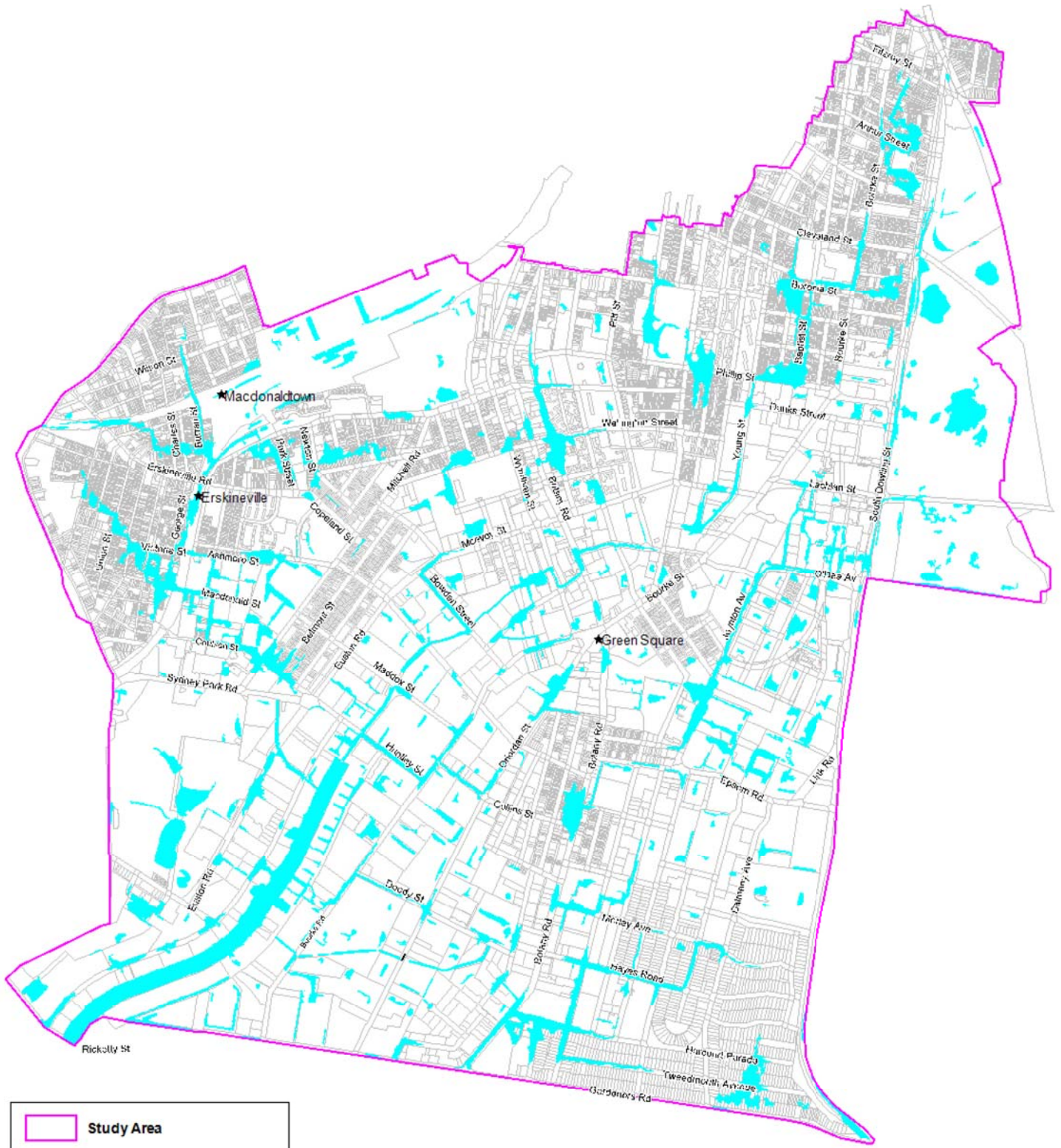



 Study Area


 10yr ARI Flood Extent

Note: Results filtered to show areas where depth $\geq 0.15\text{m}$ or velocity-depth product $\geq 0.1\text{m}^2/\text{s}$ (as described in Section 6.1).

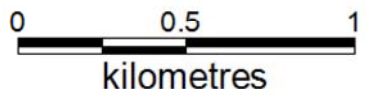


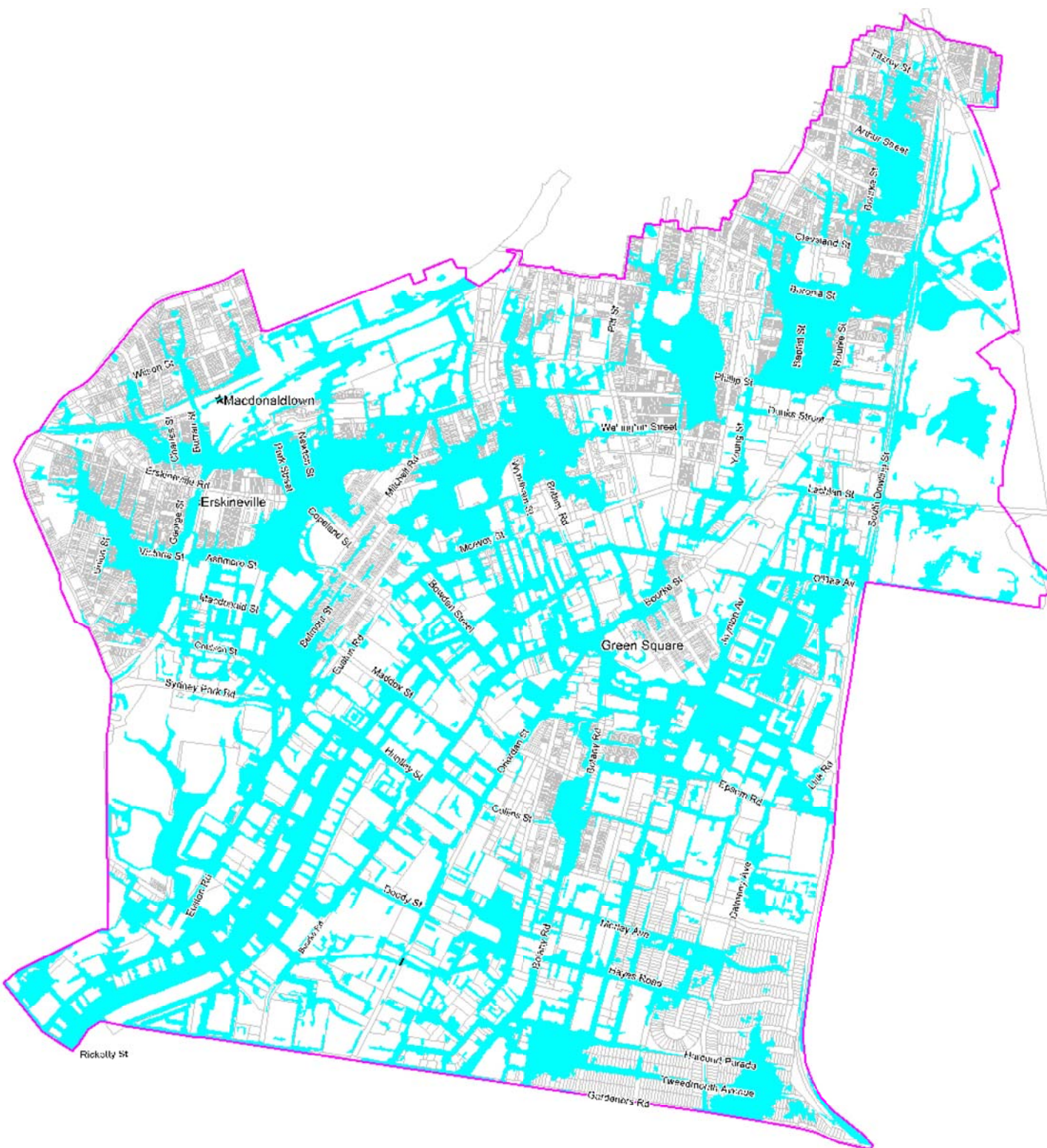
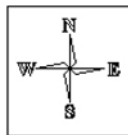



 Study Area


 20yr ARI Flood Extent

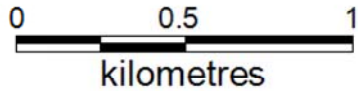
Note: Results filtered to show areas where depth $\geq 0.15\text{m}$ or velocity-depth product $\geq 0.1\text{m}^2/\text{s}$ (as described in Section 6.1).





 Study Area

 PMF Extent

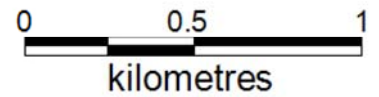
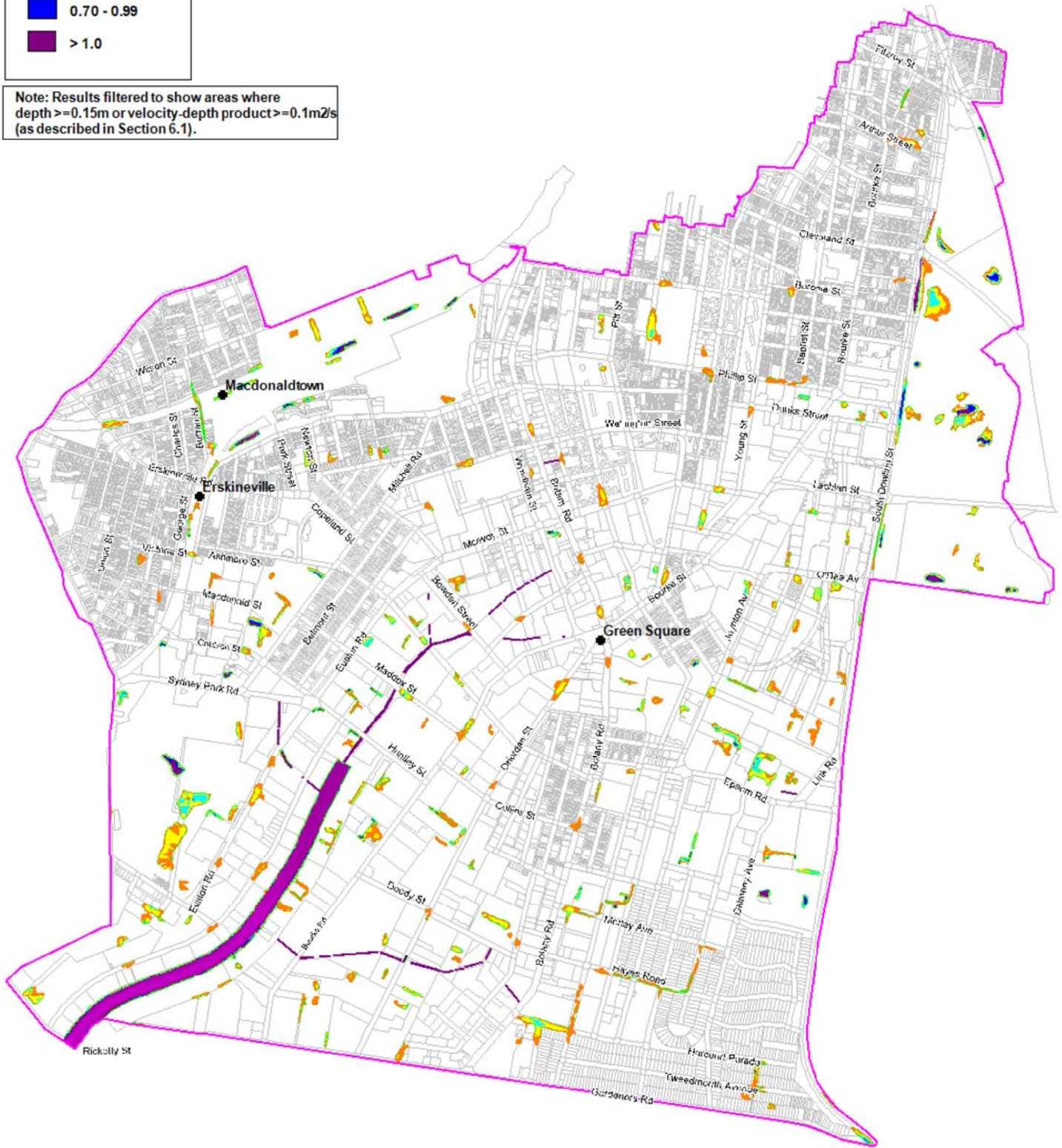


Note: Results filtered to show areas where depth $\geq 0.15\text{m}$ or velocity-depth product $\geq 0.1\text{m}^2/\text{s}$ (as described in Section 6.1).

**LEGEND -
PEAK DEPTH (m)**

- 0.01 - 0.10
- 0.10 - 0.30
- 0.30 - 0.49
- 0.50 - 0.69
- 0.70 - 0.99
- > 1.0

Note: Results filtered to show areas where depth $\geq 0.15\text{m}$ or velocity-depth product $\geq 0.1\text{m}^2/\text{s}$ (as described in Section 6.1).

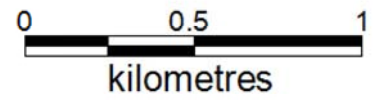
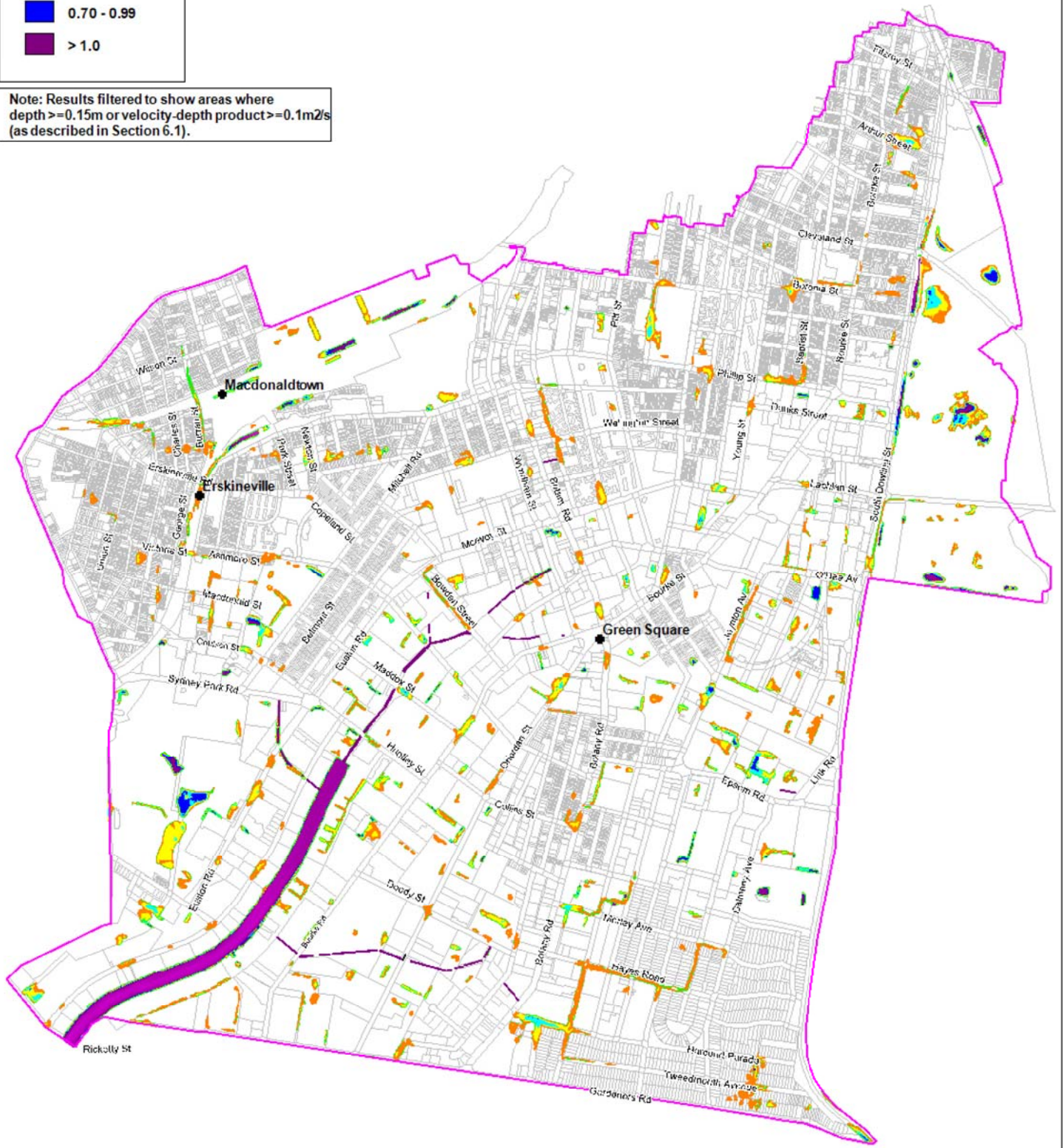




**LEGEND -
PEAK DEPTH (m)**

- 0.01 - 0.10
- 0.10 - 0.30
- 0.30 - 0.49
- 0.50 - 0.69
- 0.70 - 0.99
- > 1.0

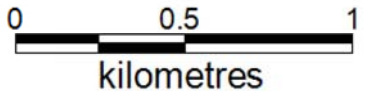
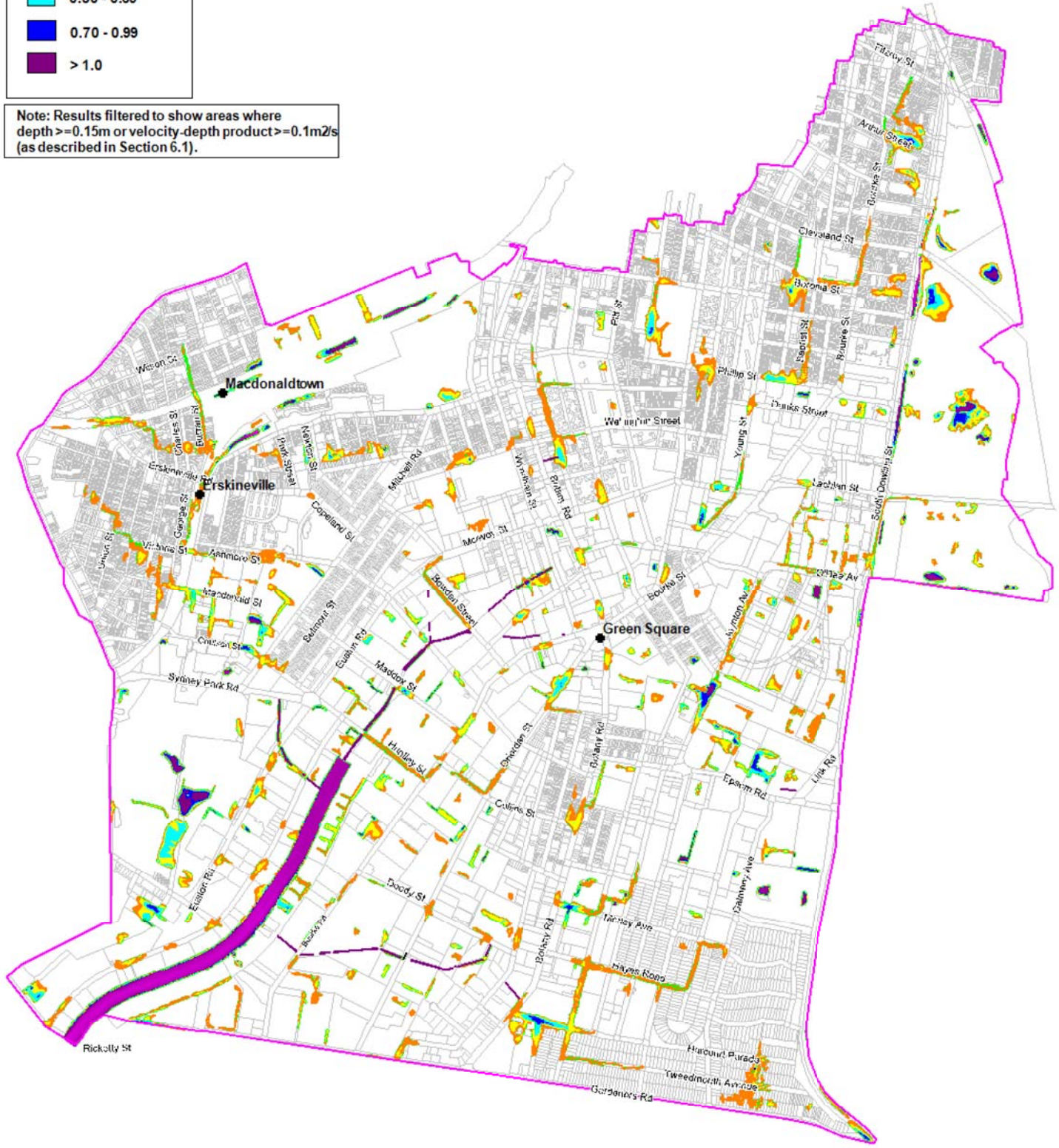
Note: Results filtered to show areas where depth $\geq 0.15\text{m}$ or velocity-depth product $\geq 0.1\text{m}^2/\text{s}$ (as described in Section 6.1).



**LEGEND -
PEAK DEPTH (m)**

- 0.01 - 0.10
- 0.10 - 0.30
- 0.30 - 0.49
- 0.50 - 0.69
- 0.70 - 0.99
- > 1.0

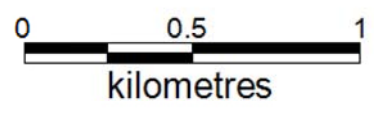
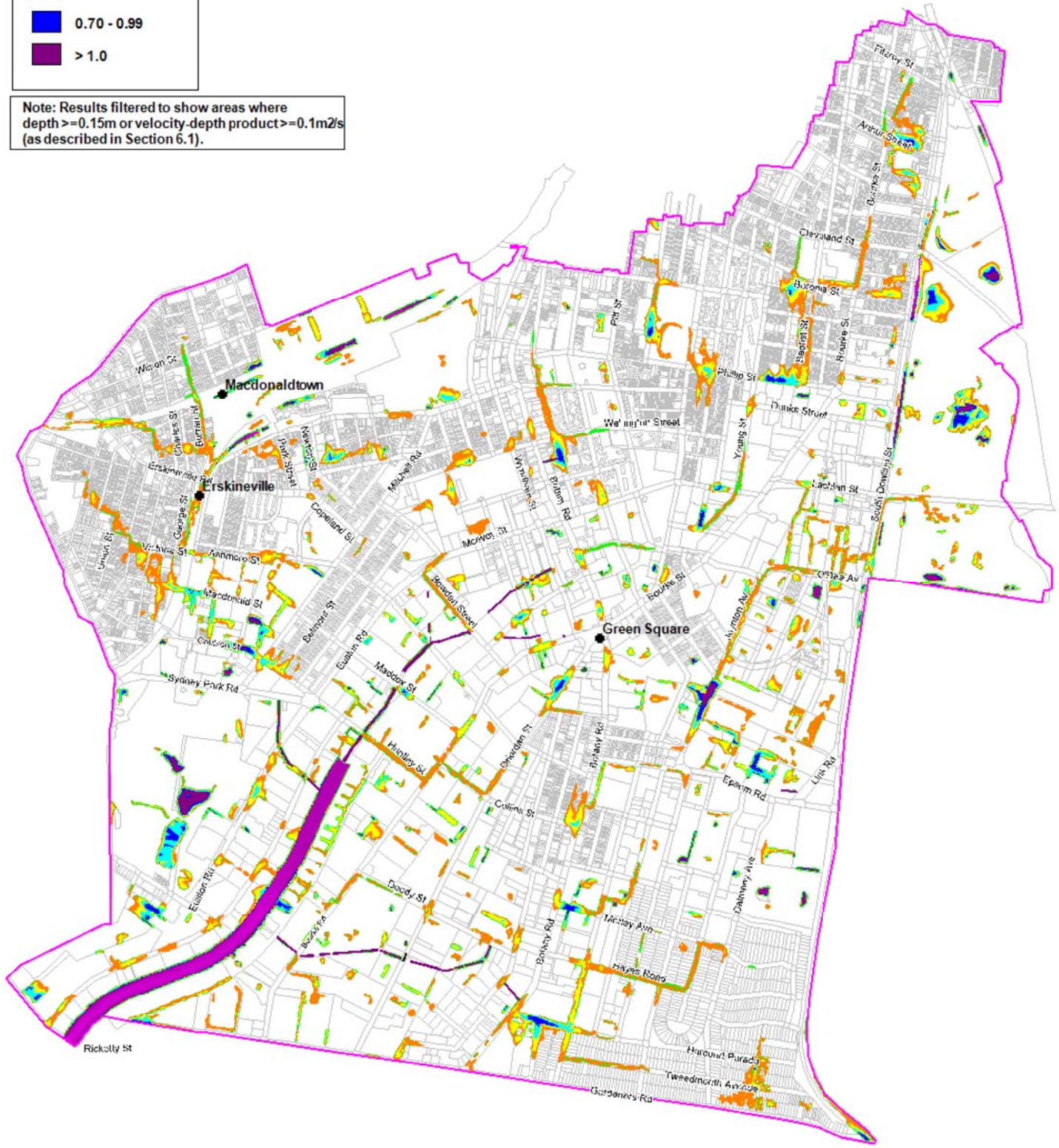
Note: Results filtered to show areas where depth $\geq 0.15\text{m}$ or velocity-depth product $\geq 0.1\text{m}^2/\text{s}$ (as described in Section 6.1).



**LEGEND -
PEAK DEPTH (m)**

- 0.01 - 0.10
- 0.10 - 0.30
- 0.30 - 0.49
- 0.50 - 0.69
- 0.70 - 0.99
- > 1.0

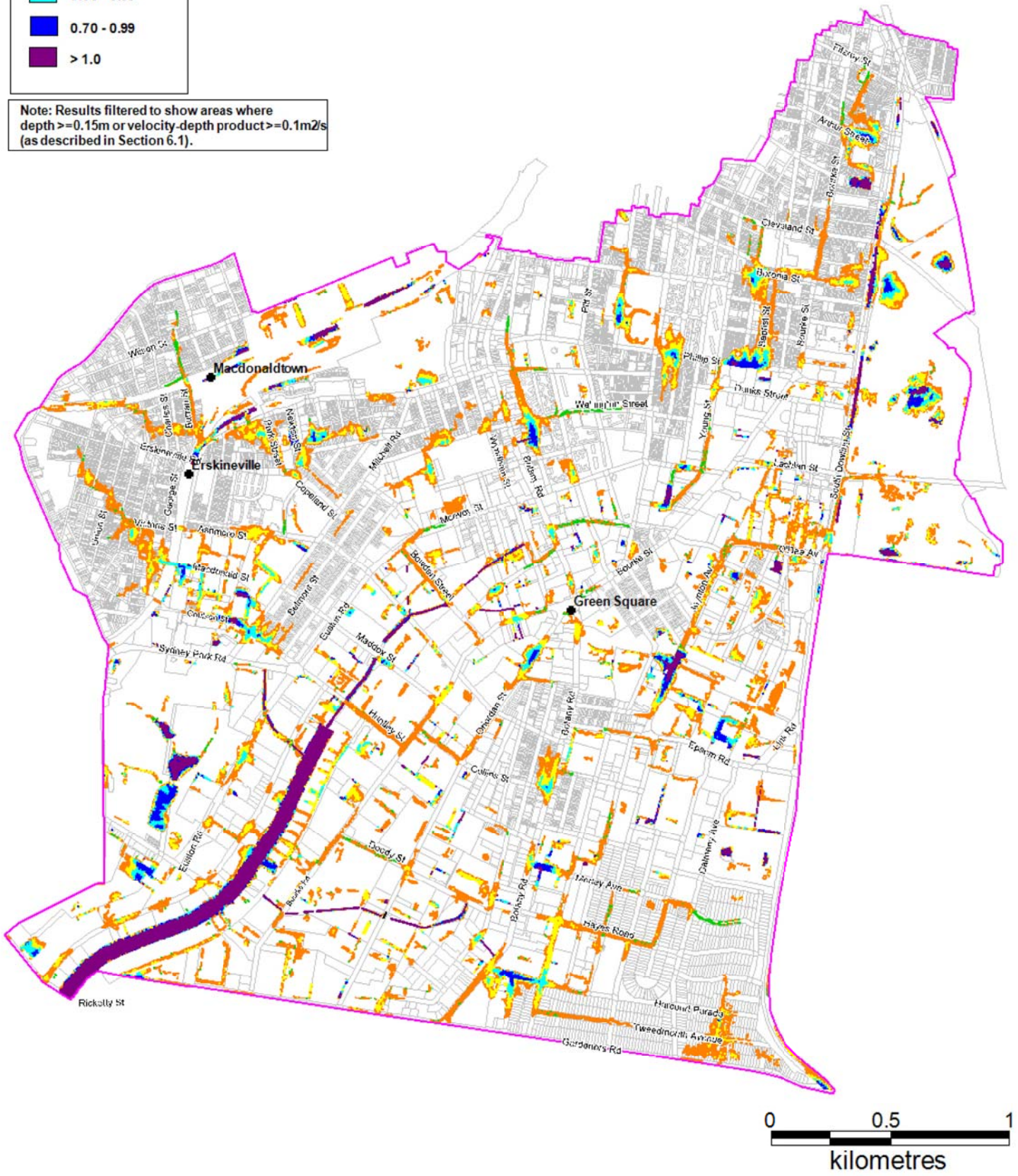
Note: Results filtered to show areas where depth $\geq 0.15\text{m}$ or velocity-depth product $\geq 0.1\text{m}^2/\text{s}$ (as described in Section 6.1).



**LEGEND -
PEAK DEPTH (m)**

- 0.01 - 0.10
- 0.10 - 0.30
- 0.30 - 0.49
- 0.50 - 0.69
- 0.70 - 0.99
- > 1.0

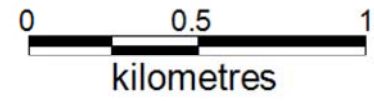
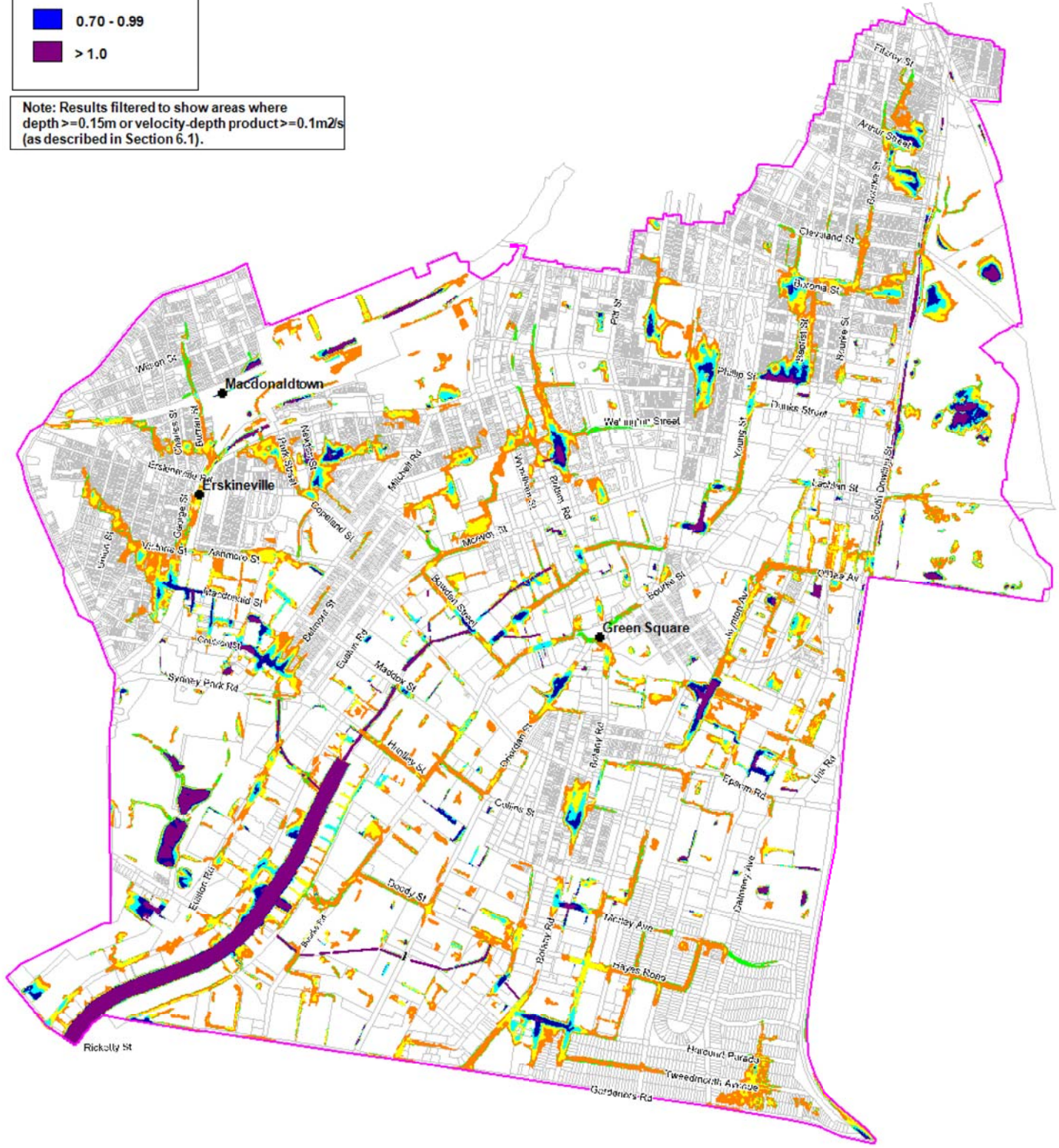
Note: Results filtered to show areas where depth $\geq 0.15\text{m}$ or velocity-depth product $\geq 0.1\text{m}^2/\text{s}$ (as described in Section 6.1).



**LEGEND -
PEAK DEPTH (m)**

- 0.01 - 0.10
- 0.10 - 0.30
- 0.30 - 0.49
- 0.50 - 0.69
- 0.70 - 0.99
- > 1.0

Note: Results filtered to show areas where depth $\geq 0.15\text{m}$ or velocity-depth product $\geq 0.1\text{m}^2/\text{s}$ (as described in Section 6.1).



LEGEND -
PEAK DEPTH (m)

- 0.01 - 0.10
- 0.10 - 0.30
- 0.30 - 0.49
- 0.50 - 0.69
- 0.70 - 0.99
- > 1.0

Note: Results filtered to show areas where depth $\geq 0.15\text{m}$ or velocity-depth product $\geq 0.1\text{m}^2/\text{s}$ (as described in Section 6.1).

